

New!

InSpec for Windows Metrology Software For Manual Systems

InSpec goes beyond a measuring digital readout (DRO) with it's large display and robust set of measuring functions. This is the third generation of Micro-Vu's InSpec software.

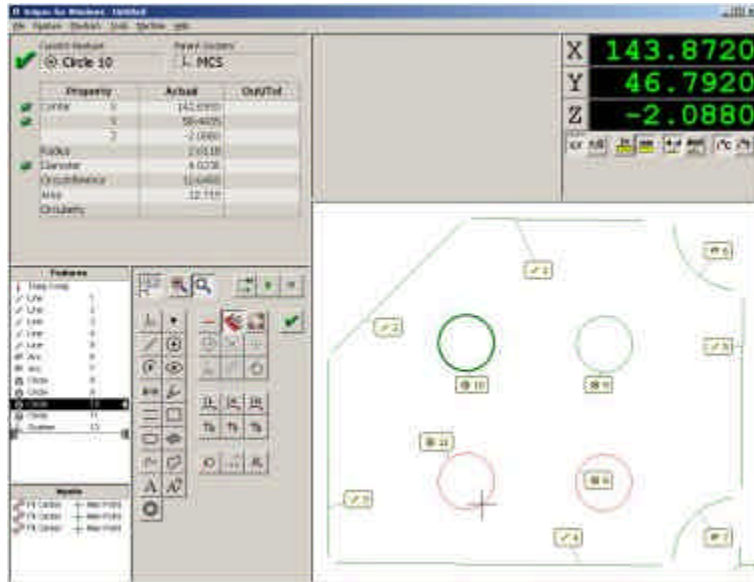
The software has been redesigned for ease of use without sacrificing any of the powerful measuring functions. Icons are centrally located to minimize mouse movement.

InSpec software may be added to optical or video measuring systems manufactured by Micro-Vu or by most other manufacturers.

The software uses USB to communication to the InSpec interface box simplifying installation onto any Windows 2000 computer.

Improve the accuracy of your measurement system with linear and nonlinear correction.

With CAD import/export, reverse engineer parts and create new measurement routines automatically.



Micro-Vu's InSpec metrology software for manual coordinate measuring machines includes the following features and more:

- X, Y, Z, and Rotary Measuring
- Large DRO Style Display
- Graphic Display of Part being Measured
- Point and Click Measurement and Programming
- Graphical Prompts for Measurements
- ANSI Y 14.5 Tolerancing
- Print Reports with Graphics
- Data Export to SPC, Spreadsheets, etc.
- Online Help System
- Optional Profile Edge Detection